

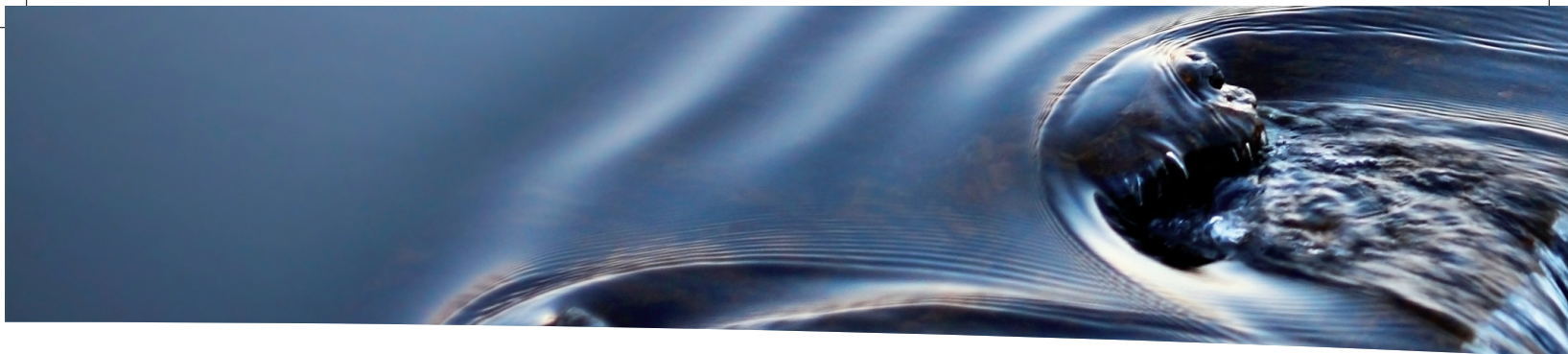


The best equipment
to reach the summit.



Serena Series





Steam technology

We have worked for 20 years
of steam technology...

Our industry expertise
has enabled us
to produce a new
generation autoclave
which fully meets the new
regulations concerning
steam sterilizers.

Serena, a concentrate of
technology, fast, quiet,
safe and practical
in all its functions.



A waterfall of technology

RELIABILITY

7 sensors in total control

SECURITY

Security systems and tests conforming to EN 13060

LOW POWER CONSUMPTION

Water and Energy saving

SEMPLIFICATION

Data storage on paper or in digital form with the supplied CD



RAPIDITY

Built-in steam generator

ASSISTANCE

Great support always-on

AUTOMATIC FILLING AND DISCHARGE

Thanks to the optional depurator **KIARA-TEC**

ONLY
"B"
CYCLES

TRACEABILITY

Only "B" cycles that is sterilization of hospital level. Immediate connection between the patient, instruments and sterilization cycle

Ease of use



Precise information

Automatic door opening and closing

Stainless steel door free of corrosion

Test cycles

Flexible configurations - Trays

18 lt > trays measures 335 x 185 mm

23 lt > trays measures 480 x 185 mm

High capacity to contain tools



+20%
of
capacity



Rapid and economical

Technology multi probe

Multi probe integrated software technology for better sterilization cycle control

Vaporizer for faster execution of a cycle

Pre-heating of the chamber

Time savings for the execution cycles

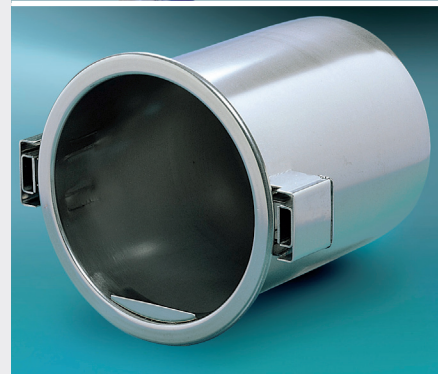
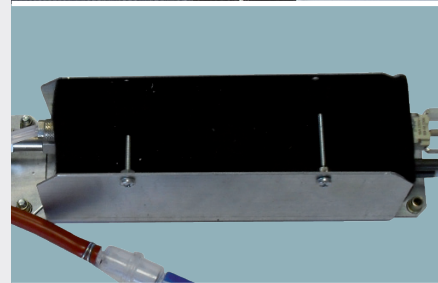
Night cycle

Deferred execution of a cycle

Anti-condensation system automatically at the end of each cycle

Consumption reduced consumption of water and energy

Water quality control resulting in the preservation and protection of the instrumentation





Traceability

Registration of cycle parameters on SD card or printed on paper

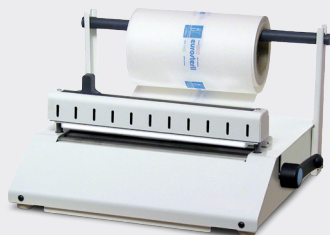


Optional

Printer



Sealing machine



Distiller



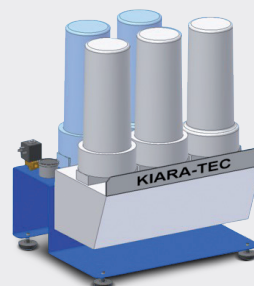
Labeller

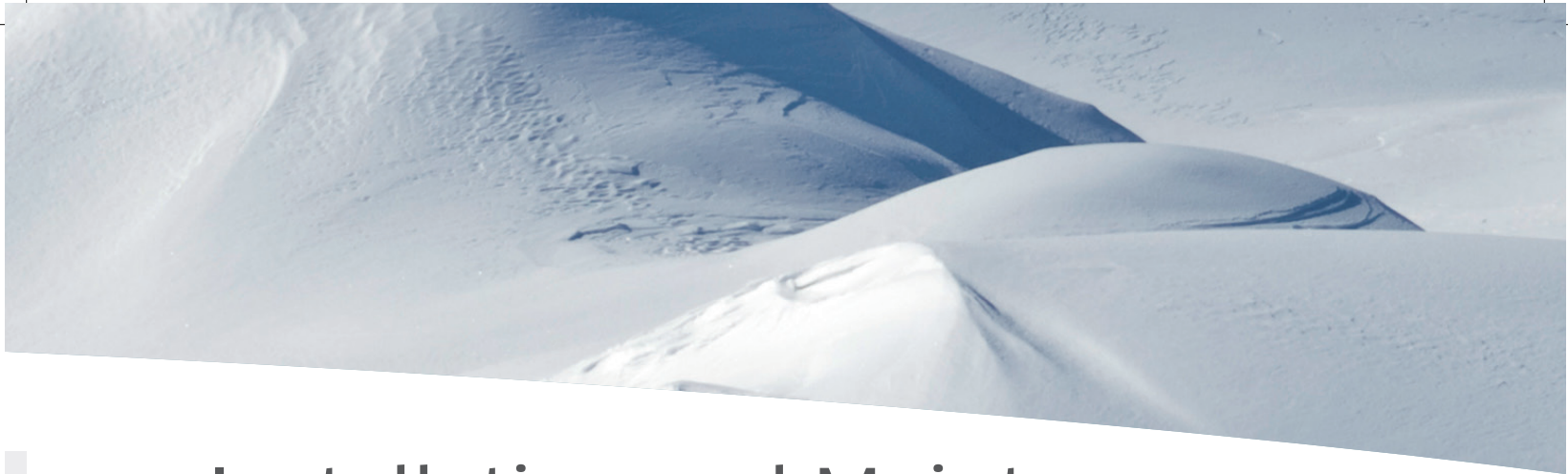


Barcode reader

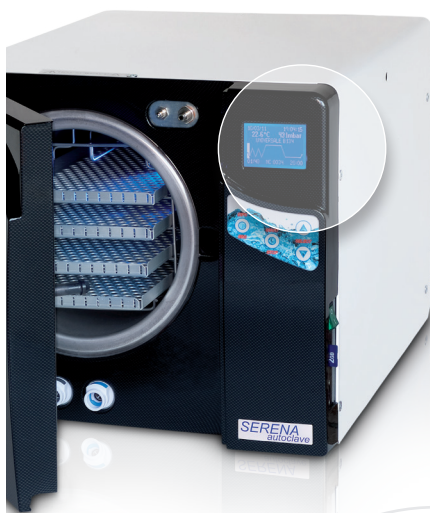
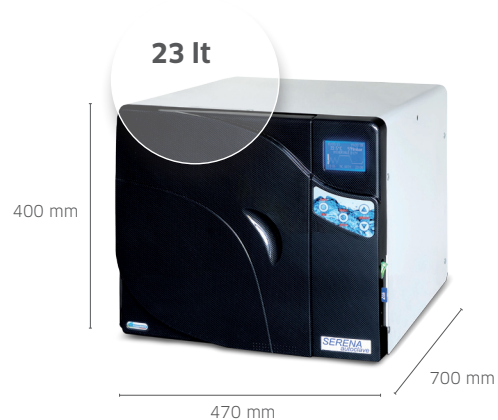
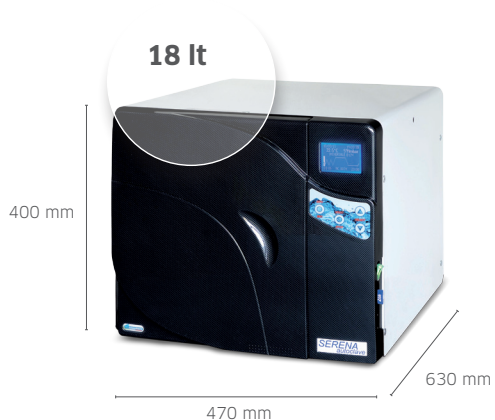


Water depurator





Installation and Maintenance



Info display

Simplified management of maintenance with cycles numbers indicator and with a warning in the display



Front taps Serena

Filling and emptying front for added convenience



KIARA-TEC

Automatic loading of the water treatment plant with a link to KIARA-TEC depurator compliant to IEC 61770 e EN285



Serena sterilizers are designed, validated and certified according to european directives and standards applicables:

93/42/EEC	Medical devices directive
2014/68/UE	Pressure vessel directive
ISO 17665 (EN 554)	Validation and periodic checks
EN 13060	Small steam sterilizers
EN 61326	Emc
EN 61010-1	Safety requirements
EN 61010-2-040	Safety requirements for steam sterilizers
EN 62304	Medical devices software
EN 14971	Risk management

TECNICAL DATA

Power	220-240 VCA 50-60 Hz/10 A
Power consumption	2000-2400 W-10 A
External dimensions (mm)	18 lt W: 470 - H: 400 - D: 630 23 lt W: 470 - H: 400 - D: 700
Weight	18 lt > 45 kg - 23 lt > 50 kg
Average noise/max	61/65,5 dB
Capacity of water tanks	3,5/3,5 liters
Autonomy	8-12 cycles
Water quality	< 15 µS
Chamber size (mm)	18 L - Ø : 236 - D : 360 23 L - Ø : 236 - D : 530

REV.01 dd 25.01.2017

For more information, see "pre-purchase"



Reverberi Arnaldo Srl

Via Don L. Sturzo, 6
42021 Barco di Bibbiano (RE) - Italy
www.reverberisrl.com

T +39 0522 875159 / 875195
F +39 0522 875736 / 875579
@ reverberisrl@gmail.com



Company with Certified Quality System
UNI EN ISO 9001 & EN13485